

ASCLS-CNE

American Society for Clinical Laboratory Science

Central New England

Massachusetts - New Hampshire - Rhode Island

Microbiology

Chemistry

Blood Banking

Management

Societal Issues

Hematology

Immunology

Biotechnology

Histology

Public Health

Cytology

Phlebotomy

Forensic Science

Molecular Biology

Student Forum

63rd

Annual Clinical Laboratory Science Convention

May 3-5, 2011

Rhode Island Convention Center

Providence, Rhode Island

Jointly sponsored with

BRISAH—Board of Rhode Island Schools of Allied Health

CLMA - Bay State Chapter CLMA

RICA - Rhode Island Cytology Association

NEB ASM - Northeast Branch American Society for Microbiology

ASCLS-CNE Executive Board

President

Maddie Josephs, Community College of Rhode Island, Lincoln

President-Elect

Kyle Braga, CharterCARE Health Partners, RI

Past President

Denise Morel, Sturdy Memorial Hospital, Attleboro, MA

Secretary

Kerrie Larisa, VAMC, Providence, RI

Treasurer

Beth Hart, University of Massachusetts-Dartmouth, MA

Student President

Brandon Healy, University of Massachusetts-Dartmouth, MA

Board of Directors

Leslie Martineau, CharterCARE Health Partners, Rhode Island

Kyle Riding, Children's Hospital, Boston, MA

Lynne Brodeur, University of Massachusetts, Dartmouth, MA

Frank Scarano, University of Massachusetts, Dartmouth, MA

First Year Professional

Amanda Speeckaert, BIDMC, Boston, MA

The American Society of Clinical Laboratory Science of Central New England is a constituent Society of the American Society for Clinical Laboratory Science. Our membership is a combination of Massachusetts, Rhode Island and New Hampshire residents. These members work on behalf of laboratory practitioners and the practice field in an attempt to provide improved diagnostic technologies, patient understanding of testing, access of clinical scientists to quality professional development and legislation promoting professional standards and licensure. These actions represent safeguards for the patient as a consumer and the clinical scientist as a professional. Networking within our profession creates bridges, supporting our personal and work lives. The combined energies of this organization create a powerful body.

There are many issues currently facing our profession and ASCLS needs your membership and support. Some of the other issues and activities with which ASCLS-CNE is currently involved in include lobbying for appropriate reimbursement for laboratory services, developing a public relations campaign for the clinical laboratory industry and offering continuing education for laboratory personnel throughout southern New England. None of these activities can continue without the personal and financial support of our members.

**If you are interested in becoming a member,
or in
renewing your membership, please do so at
www.ascls.org.**

2011 Program Committee

General Chairman

David Mello, Rhode Island Hospital, Providence, RI

Program Chair

Maddie Josephs, Community College of RI, Lincoln, RI

Chemistry

Kyle Braga, CharterCARE Health Partners, RI

Denise Morel, Sturdy Memorial Hospital, Attleboro, MA

Microbiology

Fran Ingersoll, Clinical & Laboratory Standards Institute, PA

Kerrie Larisa, VAMC, Providence, RI

Biotechnology

Gregory Paquette, University of Rhode Island, Kingston, RI

Molecular Biology

Shashi Mehta, UMDNJ, Newark, NJ

David Le, Rhode Island Hospital, Providence, RI

Forensic Science

Debra Sizemore

Hematology

Karen Ferreira, Rhode Island Hospital, Providence, RI

Diane Cataldo, CharterCARE Health Partners, RI

Blood Bank

Phil Hoffman, St. Joseph Health Services, North Prov., RI

Darlene Folan, Rhode Island Blood Center, Providence, RI

Jo Maynard, Rhode Island Blood Center, Providence, RI

Public Health

Mary Louise Greeley, Salve Regina University, Newport, RI

Cytology

Barbara Klitz, University of Rhode Island, Providence, RI

Nadia Saadeh, University of Rhode Island, Providence, RI

Phlebotomy

Janice Guibeau, Rhode Island Hospital, Providence, RI

Matthew Keane, Rhode Island Hospital, Providence, RI

Management

Leslie Martineau, CharterCARE Health Partners, RI

Exhibits

Jim DeVona, Kent Hospital, Warwick, RI

Maureen Brown, Kent Hospital, Warwick, RI

Registration

Maddie Josephs, Community College of RI, Lincoln, RI

Finance

Beth Hart, University of Massachusetts-Dartmouth, MA

Frank Scarano, University of Massachusetts, Dartmouth, MA

Wayne LeBlanc, University of Massachusetts, Dartmouth, MA

Poster Session

Mary Lou Frias, Bridgewater State University, Bridgewater, MA

Barbara Klitz, RI School of Cytology, Providence, RI

Awards

Lynn Russell, Monson, MA

Membership & Hospitality

Leslie Martineau, CharterCARE Health Partners, RI

Student

Brandon Healy, University of Massachusetts-Dartmouth, MA

Bryan Danilchuk, University of Massachusetts-Dartmouth, MA

Jonathan Dryjowicz-Burek, University of Mass-Dartmouth, MA

American Society for Clinical Laboratory Science-Central New England

General Meeting Information

Nametags: Name tags will be provided at the registration desk and are required for admission to all sessions.

Messages: Please use the message board in the registration area for general messages. For **emergency** messages, call Rhode Island Convention Center at (401)458-6500.

Program Brochures: for additional brochures, call Convention chairman David Mello, (401)444-5724 or email at djmello@lifespan.org.

Membership: Please visit the Membership Booth for information about ASCLS.

Continuing Education: Registrants will receive a "Certificate of Attendance" for each session attended. All sessions and workshops are approved as continuing education in accordance with RI state regulations. Contact hours are listed by each session. All attendees are required to sign official attendance rosters at each session to verify contact hours awarded. Representatives from the Program Committee will be glad to assist you with continuing education needs or questions.

Special needs: The meeting facility is wheelchair accessible. For special needs, please contact the RI Convention Center.

No Smoking Policy: Smoking is not permissible in the facility.

Exhibit Only: Complimentary passes will be issued at the registration desk for those wishing to visit the exhibits only. Please do not pre-register for "exhibit-only" passes.

Registration Form: Please use the form located at the back of the program brochure. **This form may be photocopied.** Please use a separate form for each person registering.

REGISTRATION DEADLINE– APRIL 30, 2011

Mail registration form to:

Maddie Josephs
43 Bourne Avenue
Rumford, RI 02916

No refunds will be given after April 30, 2011 Payment must accompany the form. Payment or money order should be made payable to:

ASCLS/CNE

You will be notified by phone if workshops are full. Otherwise, you will be registered by the deadline date. Register early!!!

If you have questions regarding your registration, please call Maddie Josephs at (401)434-0050 or email mjosephs@ccri.edu.

Pre-registration (postmarked by April 30, 2011) will include parking. Vouchers will be included in the registration packets, which are picked up on the day of attendance.

PARKING VOUCHERS MUST BE EXCHANGED FOR A PARKING PASS WHICH IS NEEDED TO EXIT THE PARKING GARAGE. THESE WILL BE MADE AVAILABLE TO REGISTRANTS AT THE REGISTRATION TABLE.

Greetings,

On behalf of the American Society for Clinical Laboratory Science of Central New England (ASCLS-CNE), it is my pleasure to welcome you to the 63rd Annual Clinical Laboratory Science Convention.

Once again, the convention committee has assembled an outstanding group of speakers to present over 50 scientific sessions, including seminars and workshops. Vendors from a number of companies are on hand to present the newest diagnostic tests and instrumentation for your review. We thank all of the exhibitors and sponsors for their continued support of this meeting. The program committee welcomes new members. If you would like to be a part of the planning for future conventions, please see me or David Mello at any time during the convention.

This convention is once again presented for the benefit of laboratory professionals in our region, and on behalf of the Program Committee, I wish you all a great experience and hope you all enjoy this year's Clinical Laboratory Science Convention.

Sincerely,

Maddie Josephs, MS,CLS, MT(ASCP)
President, ASCLS-CNE 2009-2011

Tuesday May 3, 2011

8:00am-3:00pm Registration
11:00am-11:15am Coffee Break
12:15pm-2:00pm Lunch break (separate fee for lunch required)

Tuesday luncheon session:

Patient Centered Care-Pat Mastors

This luncheon session will highlight patient advocacy and patient centered care at the bedside. The speaker will also discuss a new bedside safety/amenity system currently undergoing clinical trials.

3:00pm-3:15pm Coffee Break

REGISTRATION OPENS AT 8:00AM TUESDAY ONLY

WORKSHOP #1 Parasitology

8:00am to 3:30pm ***** NOTE START TIME*****

(6 hours)

Full day workshop

Practical Diagnostic Medical Parasitology: 2011

This full day workshop will include topics such as the development of laboratory test menus, specimen ordering, collection, testing, reporting, report comments, clinical relevance, management and proficiency testing pitfalls. Routine vs. STAT procedures and in-house vs. reference lab testing will be covered. Diagnostic problems, new methods, emerging pathogens and specific problem issues related to protozoa, helminthes, and blood parasites will be included. Specific issues will be illustrated using actual case histories from immunocompetent, as well as immunocompromised patients. An extensive handout will be provided.

Lynne S. Garcia, MS, CLS(NCA), MT(ASCP), F(AAM)

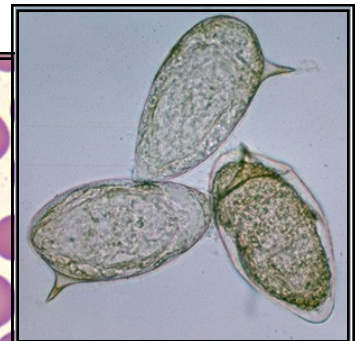
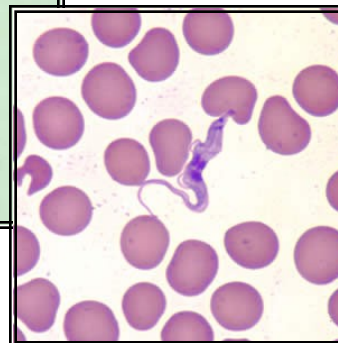
Director

LSG and Associates

Santa Monica, CA

Sponsored by Medical Chemical Corporation

.....This Workshop is limited to 30 people.....



Tuesday May 3, 2011

CHEMISTRY

10:00am - 11:00am

(1 hour)

A Vitamin D Primer: The Historic Significance of Vitamin D Deficiency

This talk will address fundamentals of Vitamin D with regard to metabolism, pharmacology, and toxicology. The impact of Vitamin D insufficiency will be reviewed from a historical viewpoint. Finally, pragmatic and necessary aspects of Vitamin D testing will be addressed.

Brian Lauber, MT(ASCP)
Senior Marketing Manager
DiaSorin Inc.
Stillwater, MN

Sponsored by DiaSorin

11:15am-12:15pm

(1 hour)

A Difficult Diagnosis: Autoimmune Vasculitis

The clinical diagnosis of autoimmune vasculitis is difficult. This presentation will discuss the clinical aspects of various forms of autoimmune vasculitis, and the laboratory tests that can assist the clinical lab in making the diagnosis. We will look at traditional tests and newer testing schemes for autoantibodies that are associated with vasculitis.

Eric S. Hoy, Ph.D., SI(ASCP)
Clinical Associate Professor
The University of Texas-
Southwestern Medical Center
Dallas, TX

Global Focus Marketing & Distribution

CHEMISTRY

2:00pm-4:15pm

(2 hours)

New Advances in the Laboratory Diagnosis of Autoimmune Diseases

This presentation will provide an overview of autoimmune diseases, and will focus on the clinical application of laboratory tests for autoantibodies. We will critically examine newer technologies that can detect multiple autoantibodies and low levels of antibodies.

Eric S. Hoy, Ph.D., SI(ASCP)
Clinical Associate Professor
The University of Texas-
Southwestern Medical Center
Dallas, TX

Global Focus Marketing & Distribution



PROVIDENCE, RHODE ISLAND

Tuesday May 3, 2011

HEMATOLOGY

10:00am-11:00am (1 hour)

Normal & Reactive Lymph Nodes

This presentation will review the morphology of normal lymph nodes and major types of reactive lymphadenopathies.

Evgeny Yakirevich, MD, DSc

Attending Pathologist

Lifespan Academic Medical Center

Assistant Professor of Pathology

Warren Alpert Medical School of Brown University
Providence, RI

11:15am-12:15pm (1 hour)

Circulating T-Cell Leukemia/Lymphomas: A Practical Review for Clinical Laboratory Scientists

T-cell lymphoproliferative processes represent a broad spectrum of hematologic disorders which range from acute (immature) to chronic (mature) neoplasms involving a variety of human tissues including peripheral blood, lymph nodes, bone marrow, liver, spleen, skin, etc. Their clinical presentation hematologic and immunophenotypic findings, and molecular characteristics are significantly different to those of their B-cell counterparts, with marked differences in prognosis and therapeutic implications. Indeed, their very diagnosis is oftentimes exceedingly challenging and requires integration of a number of diagnostic modalities in order to arrive at the correct classification of the T-cell process. This presentation will emphasize those T-cell disorders that involve the peripheral blood and will review the most pertinent morphological features, immunophenotypic characteristics, cytogenetic and molecular findings.

Dariusz R. Stachurski, MD

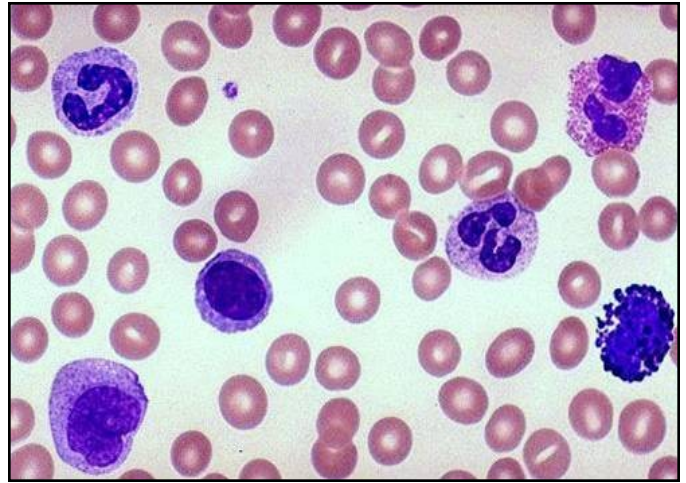
Surgical & Hematopathologist,

Lifespan Academic Medical Center

Assistant Professor of Pathology

Warren Alpert Medical School of Brown University
Providence, RI

HEMATOLOGY



2:00pm-4:15pm (2hours)

Hematology Case Studies: A Multidisciplinary Approach

This session is designed for generalist or hematology lab professionals seeking information on the diagnosis of hematologic disease. Discussion will include the importance of morphologic evaluation of the peripheral blood and bone marrow aspirate smears, as well as ancillary testing such as flow cytometry, immunohistochemistry, cytochemistry, cytogenetics and molecular techniques. Several case studies will be presented including acute leukemia, myelodysplastic syndrome, lymphoproliferative disorder and other hemic malignancies.

Karen Ferreira, MS, MT(ASCP)

Senior Lead Path Tech Specialist

Rhode Island Hospital

Providence, RI

Tuesday May 3, 2011

BLOOD BANK

10:00am-11:00am (1 hour)

Babesia Testing Investigational Containment Study

Transfusion transmitted Babesiosis is the most frequent transfusion transmitted microbial agent in the United States. The Rhode Island Blood Center implemented the first donor screening testing to detect Babesia. Under an Investigation of a New Drug Protocol, this presentation will describe the results.

Carolyn Young, MD
Vice President & Chief Medical Officer
RI Blood Center
Providence, RI

11:15am-12:15pm (1 hour)

The Effect of RBC Storage on Patient Outcomes: Does Age Matter?

One of the most controversial topics in our field in recent years has been the question of whether or not the transfusion of stored RBC has adverse effects on patients. It has been proposed that the numerous changes which are known to occur to RBC during storage impair their function and may be actively deleterious. A large number of retrospective clinical studies and a few prospective studies have been carried out to address this issue, but the results have not been conclusive. Within the past two years, several randomized clinical trials addressing the effect of RBC storage on patient outcomes have been initiated. In this session, the speaker will summarize our current understanding of this issue based on the results of published clinical studies, and describe several randomized, controlled clinical trials which have been designed to provide an answer to this question.

Christopher P. Stowell, MD, Ph.D
Director, Blood Transfusion Service
Massachusetts General Hospital
Associate Professor of Pathology
Harvard Medical School
Boston, MA

BLOOD BANK

2:00pm-3:00pm (1 hour)

The First Casualty of War is Truth: Recent Studies on Massive Transfusion

Recent retrospective studies from the Iraq and Afghanistan wars have prompted a sea of change in how severely injured patients are managed with blood products. Rather than using the traditional laboratory-guided approach, many trauma services have shifted to formula-based strategies for massive transfusion (1:1 ratio of plasma to RBCs). This talk will critically examine the data supporting this approach. Other issues discussed will include the use of fresh whole blood and hemostatic agents such as recombinant factor VIIa in severe trauma.

Richard Kaufman, MD
Medical Director, Adult Transfusion Services
Brigham & Women's Hospital
Boston, MA

3:15pm-4:15pm (1 hour)

The American Red Cross Hemovigilance Program: Advancing the Safety of Blood Donation and Transfusion

Since 2005, the ARC Hemovigilance Program has systematically evaluated adverse reactions and complications following blood component transfusion and donation & driven improvements in safety for both patients and blood donors. This presentation reviews the data on complications following blood donation and transfusion in the American Red Cross, and discusses the strengths and limitations of our national hemovigilance program.

Anne Eder, MD, PhD
Executive Medical Director
American Red Cross National Headquarters
Biomedical Services
Rockville, MD

Sponsored by American Red Cross

PHLEBOTOMY



10:00am –12:15pm

(2 hours)

Quality Phlebotomy

Quality phlebotomy ensures better patient care by reducing errors and increasing efficiency. The quality of blood specimens has an important role for prognosis, diagnosis and treatment. The laboratory staff must recognize the importance of good phlebotomy techniques.

Objectives:

Discuss phlebotomy procedures to increase the overall quality of specimen collections
Determine the causes and prevention of hemolysis
Determine the causes and prevention of short draws

Kathleen Finnegan, M.S., MT(ASCP)SH^{CM}

Clinical Associate Professor/Chair
Stony Brook University
Stony Brook, NY

Sponsored by Greiner-BioOne

PHLEBOTOMY

2:00pm - 4:15pm

(2 hours)

Pediatric & Geriatric Phlebotomy

Collecting blood from a pediatric or geriatric patient is challenging and requires expertise and knowledge. The health care worker needs to be familiar with various techniques and develop competence in relating psychologically with children and the elderly.

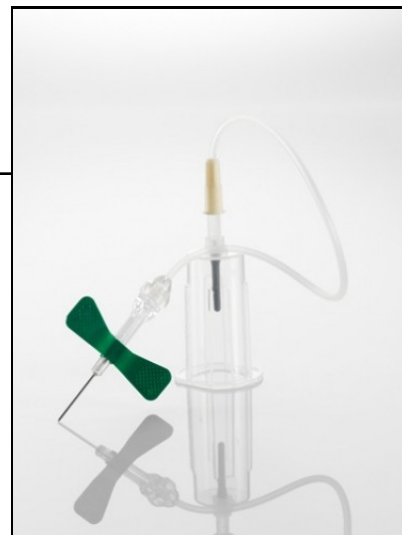
Objectives:

Discuss age specific considerations for pediatric phlebotomy
Describe physical and/or emotional changes associated with the aging process
Discuss the procedure for specimen collection from pediatric and geriatric patients

Kathleen Finnegan, M.S., MT(ASCP)SH^{CM}

Clinical Associate Professor/Chair
Stony Brook University
Stony Brook, NY

Sponsored by Greiner-BioOne



Tuesday May 3, 2011

MICROBIOLOGY

10:00am-12:15pm

(2 hours)

**Real-Time PCR (really) From Top
(enterovirus in CSF) to Bottom (C.diff
you know where...)**

This half-day presentation will discuss the nucleic acid technologies available for rapid laboratory and point-of-care testing of CSF for enteroviruses; female genital samples for group B streptococci; feces for *Clostridium difficile* and vancomycin resistant enterococci, respiratory samples for influenza A&B; nasal swabs for *Staphylococcus aureus* & MRSA; wounds and positive blood cultures. Sample collection and preparation for all the assays will be discussed. Volunteer participants will be trained and then will actually perform several of these assays in real time during the workshop using a Cepheid GeneXpert instrument. Examples from published literature will be presented to support the cost-benefits of using the most rapid and sensitive assay for initial patient testing, despite its relatively higher reagent cost compared with competing technologies.

Ellen Jo Baron, Ph.D., D(ABMM)
Professor Emerita
Sanford University
Sunnyvale, CA

Sponsored by Cepheid

MICROBIOLOGY

2:00pm-4:15pm

(2 hours)

**Pathogenesis, World Epidemiology, and
Current State of Diagnostic Testing for TB
and Drug-resistant TB**

This presentation will review some basic principles about mycobacterial morphology and staining characteristics, highlighting the features that contribute to pathogenesis. We will review infectious dose, pathogenesis of tuberculosis and briefly mention other mycobacteria that cause human disease. We will discuss the current global epidemiology of TB and MDR-TB. Finally, methods for laboratory diagnosis in adults and children, including specimen collection, will be described. Pros and Cons of the newest methods will be presented, with time for participant interaction.

Ellen Jo Baron, Ph.D., D(ABMM)
Professor Emerita
Sanford University
Sunnyvale, CA

Sponsored by Cepheid



Microbiology Wet Workshop 2010

Tuesday May 3, 2011

BIOTECHNOLOGY

10:00am-11:00am (1 hour)

Biotechnology in New England: Overview and Career Opportunities

An overview of the major sectors-Pharmaceutical, Bio-manufacturing, medical devices and plant biotechnology; career opportunities for medical laboratory professionals, particularly in quality assurance, clinical research and bioprocessing.

Gregory E. Paquette, PhD, CLS

Professor & Director
Biotechnology & Medical Laboratory Programs
University of Rhode Island
Kingston, RI

11:15am-12:15pm (1 hour)

Genes to Vaccines: Accelerating Vaccine Discovery

To meet the dual threats of emerging infectious diseases and engineered biowarfare/bioterrorism agents, there is a pressing need for more efficient systems for vaccine development. TRIAD, or the Translational Immunology Research and Accelerated [Vaccine] Development program, based in the Biotechnology Program at the University of RI, has pioneered the development and application of an integrated "gene to vaccine" in silico, in vitro and in vivo vaccine design program to meet this need. The use of immunoinformatics to accelerate vaccine discovery will be discussed.

Denise Spero, Ph.D.

Research Professor & Co-Director
Institute for Immunology & Informatics
University of Rhode Island
Providence, RI

BIOTECHNOLOGY

2:00pm-3:00pm (1 hour)

Substitutive Medicine and Biotechnology

Substitutive Medicine & Biotechnology will focus on the use of medical devices for repair or replacement of tissues and organs. Particular attention will be placed on currently used medical devices for orthopedics, cardiovascular and neurotechnology applications. A snap shot of the medical device industry within the biotechnology sector will also be presented.

Beth Zielinski, Ph.D

Lecturer, Director Industry Outreach
Center for Biomedical Engineering
Brown University
Providence, RI

3:15pm-4:15pm (1 hour)

Plant Biotechnology: From the Green Revolution to Biofuels

There has been a revolution in agricultural biotechnology in the last decade. While much of the focus has been on feeding a hungry planet, the new focus is on developing alternative energy sources, such as biofuels. The plant biotechnology sector in New England will be discussed.

Albert Kausch, Ph.D.

Professor, Dept. of Cell & Molecular Biology
University of Rhode Island
Kingston, RI



Wednesday May 4, 2011

8:30am-3:00pm Registration
11:00am-11:30am Coffee Break
12:30pm-2:00pm Lunch break (separate fee for lunch required)

Wednesday luncheon session

Mothers' Milk Bank—Kathie Marinelli, MD

Providing pasteurized human milk to babies in fragile condition, and the role of the laboratory in this process.

3:00pm-3:30pm coffee break
4:30pm-5:30pm **EXHIBITORS' WINE & CHEESE RECEPTION** —All attendees are welcome!!!!!!
5:00pm-6:00pm **ASCLS-CNE Annual Business Meeting— All are welcomed to attend**

MICROBIOLOGY

10:00am-12:30pm (2 hours)

Infections of Leisure: “What you should know”

Everything we do in life has a risk: when we drive our cars, when we fly, take a train, eat, walk down stairs, sometimes when we walk up the stairs! But what can happen to you when you take leisure time. This lecture will discuss infections you can acquire while at the beach, at fresh water lakes and hot tubs, as well as when you work in the garden, go camping, attend sporting events, eat exotic foods and especially when you get tattoos and body piercings.

Franklin D. Meglio, MS, SM(NRM)CLS
Senior Public Health Microbiologist
Rhode Island Department of Health
Division of Laboratories
Providence, RI

MICROBIOLOGY

2:00pm-4:30pm (2 hours)

The Burden of Antimicrobial Resistance and its Clinical Impact

The presentation will review the increasing burden of antimicrobial resistance in both Gram positive and Gram negative bacteria. The discussion will include MRSA and VRE, as well as emerging resistance in *E. coli*, *Klebsiella pneumonia* and other Enterobacteriaceae. Mechanisms of antibiotic action and mechanisms of antimicrobial resistance will be presented. The talk will include clinical cases highlighting the impact of antibiotic resistance on patient care.

John R. Lonks, MD
Associate Professor of Medicine
Alpert Medical School of Brown University
Providence, RI

*****ASCLS-CNE *****

Annual Business Meeting

**Wednesday, May 4, 2011
5:00pm**

All are invited to attend!!

This is your opportunity to get involved with ASCLS

Wednesday May 4, 2011

CHEMISTRY

10:00am-12:30pm

(2 hours)

**High Sensitivity Cardiac Troponin:
The Benefits & Challenges in Managing
ED Chest Pain Patients**

Cardiovascular Disease (CVD), which includes the acute coronary syndrome (ACS) manifestations: unstable angina (UA), non-ST segment elevation myocardial infarction (NSTEMI), and ST-segment elevation myocardial infarction (STEMI) is the leading cause of mortality in the United States, taking a life every 34 seconds. Today, nearly 8 million patients present to our Emergency Departments with chest pain. High sensitive (hs) troponin is the preferred cardiac marker in establishing early and accurate risk stratification, diagnosis and prognosis of ACS. The benefits of high sensitivity troponin is well established, but with the loss of specificity come challenges in diagnosis and management and misuse of how this assay was intended to be used.

Susan Perrier, RN, MS
NE Critical Care Cardiac Manager
Siemens Healthcare Diagnostics, Inc
Tarrytown, NY

Sponsored by Siemens



CHEMISTRY

2:00pm-4:30pm

(2 hours)

Advances in Celiac Disease Diagnosis

The session starts with a brief introduction to celiac disease—what it is, the environmental trigger, clinical symptoms, genetics and epidemiology. The bulk of the presentation will be about the history of celiac disease diagnosis: association with diet, pathology, serology and testing algorithms. Scientific advances made in celiac disease diagnostic and therapeutic areas and their impact will be discussed at the end.

Wen Kumfert, Ph.D.
Product Manager
Bio-Rad Laboratories, Inc.
Hercules, CA

Sponsored by Bio-Rad

4:30pm to 5:30pm

Exhibitors' Reception

Wine & Cheese Reception

Exhibit Hall

Sponsored by Siemens

ALL ATTENDEES ARE WELCOME

Wednesday May 4, 2011

**WORKSHOP #3
FORENSIC SCIENCE**

9:00am-4:30pm

(6 hours)

Full Day Workshop

It's a Hit!! Why DNA Profiling and Databasing is a Useful Tool

This presentation will focus on the role DNA analysis and DNA databasing plays in the investigatory process.

Karen Lynch, M.S
Principal Forensic Scientist
RI Department of Health, Forensic Sciences
Providence, RI

CSI at URI: The Rhode Island State Crime Laboratory

This presentation will describe the basis of crime scene investigations and the role of the RI State Crime Laboratory in training investigators and in examining evidence obtained by crime scene investigators. Case studies will be used to illustrate the connection between investigators and the Laboratory. Emphasis will be placed on civil cases in which Blood Alcohol Concentrations were a major factor. The Forensic Science Partnership at the University of Rhode Island will also be discussed.

Dennis C. Hilliard, MS
RI State Crime Laboratory
University of Rhode Island
Kingston, RI

Studying Energetic Materials: Safety & Security

The research program at the University of Rhode Island Energetics Material lab will be discussed, including topics such as: synthesis and characterization of explosive properties and the URI database designed and available for the forensic chemist; identifying explosives and environmental aspects; signature of bad guys and bad land mines; detection and mitigation schemes.

Jimmie C. Oxley, Ph.D.
Co-director of the Department of Homeland Security of Excellence in Explosives
Co-Director of the University of Rhode Island
Kingston, RI
RI Forensic Science Partnership

The Medical Examiner & the Clinical Laboratories

The purpose of the session is to explore the application of the clinical laboratory to the practice of forensic medicine. Case studies will be used to illustrate common interactions between the medical examiners office and the various clinical laboratories.

Thomas Gilson, MD
Deputy Chief Medical Examiner
Office of the State Medical Examiner
State of Connecticut
Farmington, CT

Wednesday May 4, 2011

HEMATOLOGY

10:00am-11:00am

(1 hour)

Acute Leukemia

This lecture follows the guidelines of the WHO 2008 classification and is structured to address key diagnostic morphological features of various acute leukemias with emphasis on their peripheral blood presentation. The lecture will also include a review of the cytochemistry, immunophenotypical and cytogenetical studies used to diagnose acute leukemias, as well as a brief summary of their incidence, classification, prognosis and therapy.

Diana O. Treaba, MD

Director, Hematopathology Laboratory
Lifespan
Providence, RI

11:30am-12:30pm

(1 hour)

CLL & Multiple Myeloma: The Schizophrenic B-cell

Chronic Lymphocytic Lymphoma and Multiple Myeloma are two B-cell disorders with very different pathologic and clinical presentation. In both diseases, there are different prognostic makers that help to guide treatment or not treat at all. More importantly, novel chemotherapy and biologic agents have been developed to improve the overall responses and survival for patients afflicted with these diseases. This talk will focus on the pathogenesis, clinical aspects and treatment of these two very different B-cell diseases.

Eric Winer, MD

Assistant Professor, Brown University
Rhode Island & Miriam Hospitals
Providence, RI

HEMATOLOGY

2:00pm-3:00pm

(1 hour)

The CBC, More Complete than Ever: How New Modern Parameters are Revolutionizing the Oldest & Most Ordered Test in the Hematology Laboratory

In this presentation, we will introduce to the audience new hematological parameters that have been created in recent years. We will start with an explanation of how these parameters are generated automatically in modern hematology analyzers, then proceed with an in-depth discussion of scientific studies that describe their multiple real life applications, both in the laboratory and for clinicians.

Fernando P. Chaves, MD

Hematopathology Consultant
Beckman Coulter Eurocenter
Nyon, Switzerland

Sponsored by Beckman-Coulter

3:30pm-4:30pm

(1 hour)

Routine Hematology Case Studies

When routine peripheral blood or body fluid contain atypical cells, they may be referred for further pathology interpretation. This session will focus on how these cases are found in the routine hematology lab and how they are worked up by the pathologist.

Mark LeGolvan, DO

Attending Pathologist
RIH/Lifespan AMC
Warren Alpert School of Medicine at Brown Univ.
Providence, RI

Wednesday May 4, 2011

PUBLIC HEALTH

10:00am-12:30pm (2 hours)

Overview of Skin Cancer, Benign Neoplasms and Common Dermatoses

In this presentation, the speaker will review the most common types of skin cancers and benign neoplasms as well as common inflammatory dermatoses.

Leslie Robinson-Bostom, MD

Associate Professor of Dermatology
Director, Division of Dermatology

Warren Alpert Medical School of Brown University
Providence, RI

2:00pm-4:30pm (2 hours)

Natural Products in Cardiovascular Health and Disease

This presentation will review basic considerations in using natural products in the U.S. and will focus on the published clinical evidences supporting or refuting the use of natural products for cardiovascular health and disease in adults. Potential major drug interactions and adverse effects with these natural products will also be discussed.

Anne L. Hume, PharmD, FCCP, BCPS

Professor of Pharmacy
University of RI College of Pharmacy
Kingston, RI

Please visit our website at

www.ascls-cne.org

MANAGEMENT

10:00am-12:30pm (2 Hours)

All the Hows and Whys to Achieving Standard Work in the Laboratory

After completing this session, the learner will be able to understand and demonstrate the importance of Standard Work to other, implement and use Leader Standard Work in their laboratories and have the ability to use Standard Work to improve quality, provide consistent training, help with scheduling and better manage lab operations.

Martha Sunyog, MT(ASCP)

Lean Consultant
ValuMetrix Services, Ortho Clinical
Naples, FL

Sponsored by Ortho Clinical Diagnostics

2:00pm-4:30pm (2 hours)

Best Practices in Laboratories

This presentation will include a discussion of current tactics the laboratory can utilize to combat everyday problems. The best laboratories have practices to optimize operations and work flow. Some of these best practices will be discussed.

James J. Jarnot, MBA, MT(ASCP)SC

Technical Director
Catholic Health Laboratories
Buffalo, NY

Sponsored by Beckman-Coulter-Colby Compton

Wednesday May 4, 2011

BLOOD BANK

BLOOD BANK

10:00am-11:00pm

(1 hour)

**Strategies in Enhancing Patient Care:
Hemotherapy Bedside Biovigilance &
Electronic Medical Record**

This presentation will focus on the challenges, efforts and strategies used by one hospital system in New England in its development of an electronic medical record (EMR) related to the documentation of various Hemotherapy interventions commonly encountered in a tertiary care teaching hospital setting.

Examples of EMR formats related to the transfusion of blood products and various aspects of a Transfusion and Apheresis Medicine Service will be described. The relationships of such documentation to the blood review process, quality improvement, patient safety and Hemotherapy Biovigilance will be explored.

Chester Andrzejewski, Jr., PhD, MD, FCAP
Medical Director of System Transfusion Medicine
Services
Baystate Health
Springfield, MA

11:30am-12:30pm

(1 hour)

**Interesting Case Studies in Veterinary
Transfusion Medicine**

This session will be a case based lecture on small animals veterinary emergency and critical care cases requiring transfusion.

Lynel J. Tocci, DVM, MT(ASCP)SBB
Department Head Emergency Critical Care
Veterinary Emergency & Specialty Center
of New England
Waltham, MA

2:00pm-3:00pm

(1 hour)

**The Blood Bank's Role on the
Patient Care Team: Perspectives from an
Orthopedic Surgery Specialty Hospital
Blood Bank**

This lecture will present clinical case studies of various orthopedic patients pre- and post operative transfusion and miscellaneous product and/or testing need, and how the Blood Bank interacts with the rest of the Patient Care Team to ensure patient needs are met. Potential type cases to be discussed are: the coordination of care for coagulation factor patients, the need to issue least incompatible RBCs and how to coordinate patients requiring rare donor blood into a pre-set OR schedule

Linda A. LeVinus, MT(ASCP)
Blood Bank Manager
New England Baptist Hospital
Boston, MA

3:30pm-4:30pm

(1 hour)

Blood Substitutes (HBOCs)...2011 Update

This session will provide participants with an update on the current status of research and development in the area of Hemoglobin-Based Oxygen Carriers (HBOCs).

Nancy H. Cornwell, M.Ed., MLS(ASCP)SBB
Blood Bank Specialist
Bio-Rad Laboratories
Benicia, CA

Sponsored by Bio-Rad Laboratories

Wednesday May 4, 2011

WORKSHOP #4 MOLECULAR

9:00am-4:30pm

(6 hours)

Full day Workshop

Advances in molecular diagnostic testing have begun to revolutionize the practice of medicine today. Molecular tests are beginning to replace many conventional tests routinely performed in the clinical laboratory. This workshop is designed to review some basic concepts of molecular testing and demonstrate current applications in the clinical setting. Participants will learn to extract DNA from blood specimens using the *Promega Maxwell 16™* automated instrument and perform real time quantitative PCR on the *Eppendorf Realplex™* rapid mastercycler system.

Cynthia Jackson, PhD

Director, Clinical Molecular Biology, Rhode Island Hospital
Associate Professor of Pathology, Brown University
Providence, RI

Shashi Mehta, PhD

Associate Professor
University of Medicine & Dentistry of New Jersey
Newark, NJ

Sponsored by PROMEGA & EPPENDORF

****THIS WORKSHOP IS LIMITED TO 20 PARTICIPANTS****



Images from
ASCLS-CNE
2010 Annual Convention



Thursday May 5, 2011

8:30am-3:00pm Registration
11:00am-11:30am Coffee Break
12:30pm-2:00pm Lunch break (separate fee for lunch required)

(Thursday luncheon session)

Risk Management: Everything You Need to Know But Were Afraid to Ask– Joseph Melino

This presentation will focus on insurance coverage, policy & procedures in the department and the importance of documentation. There will be time for questions and answers following.

3:00pm-3:30pm Coffee break

BLOOD BANK

10:00am –11:00am (1 hour)

**Horses of the Storm:
The Rescue of Hurricane Katrina's Horses
("It's All About Molly-
a Pony, a Prosthesis & a Purpose")**

Presentation of the incredible rescue of nearly 500 horses after Hurricanes Katrina and Rita and a story about Molly the Pony, a Hurricane Katrina survivor that underwent a leg amputation, prosthesis and now serves a meaningful role as an ambassador & therapeutic friend to those less fortunate.

Rustin Moore, DVM, Ph.D., DACVS
Professor & Chair, Dept. of Veterinary Clin. Sciences
College of Veterinary Medicine
The Ohio State University
Columbus, OH

Sponsored by Immucor & RIBBS

11:30am-12:30pm (1 hour)

**Emerging Pathogens & the Risk to the
Blood Supply**

This presentation will include a review of emerging pathogens such as XMRV & Dengue virus, as well as an update on the current state of nucleic acid testing for blood donor screening. It will also include a description of ongoing research to assess the risk of emerging pathogens & the development of nucleic acid tests to detect their presence in blood donors.

Frank J. Strobl, MD, Ph.D.
Global Head Scientific Affairs
Novartis Diagnostics
Emeryville, CA

BLOOD BANK

2:00pm-3:00pm (1 hour)

**Managing Antibody Resolution in a
Community Hospital**

The Community Hospital Transfusion Service continues to face multiple challenges in managing serological complexities. This discussion will emphasize these challenges and successes in achieving quality transfusion outcomes.

Gina Campagnone, MS, BB(ASCP)SBB
Blood Bank Supervisor
Norwood Hospital
Norwood, MA

3:30pm-4:30pm (1 hour)

Blood Utilization Review

The speaker will review the process for utilization of red blood cells from the viewpoints of accrediting agencies, literature review and the speaker's own experiences as Blood Bank Director and Chairman of the Transfusion Committee at a Community Hospital.

James T. Kolton, MD
Medical Director, Transfusion Medicine
Steward Norwood Hospital
Norwood, MA

HEMATOLOGY

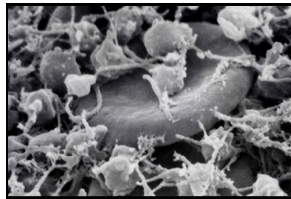
10:00am-12:30pm

(2 hours)

Congenital & Acquired Thrombocytopenia

In the first half of this session, the speaker will present the various forms of congenital thrombocytopenias, separating small, normal and large platelet types of congenital thrombocytopenia and the underlying genetic defect. This will be followed by a description of the main forms of acquired thrombocytopenia, emphasizing immune thrombocytopenias, TTP, PTP, HIT and microangiopathies associated thrombocytopenia.

Joseph Sweeney, MD, FACP, FRCPath
Professor of Laboratory Medicine
Brown University,
Providence, RI



2:00pm-4:30pm

(2 hours)

Interpreting Hematology Scatter-Plots: One Cancer Center's Keys to Seeing the BIG Picture

Practiced hematology scatter-plot interpretation can enable laboratories to deliver reliable results to clinicians in a timely manner thus facilitating improved patient care. This session will use case studies to show how such interpretation has improved the care of patients in a New York cancer center. This will include participation among session attendees. Keys to learning how laboratories can tease information out of their instruments will be discussed.

Barbara Burch, MHA, MT(ASCP)
Laboratory Manager
Aptium Oncology, NYU Clinical Cancer Center
New York, NY

Sponsored by Sysmex

MANAGEMENT

10:00am-12:30pm

(2 hours)

What's New in the Laboratory Accreditation Program

This presentation will focus on recent and upcoming changes to the LAP Checklists. The speaker will discuss the Most Frequent Deficiencies and how to avoid them, and provide a general update on new changes coming to the LAP.

Adrienne M. Malta, MBA, MT(ASCP)
Manager., Inspection Services
College of American Pathologists
Northfield, IL

2:00pm-4:30pm

(2 hours)

“The Key to Quality”: Clinical & Laboratory Standards Institute's (CLSI) Approach to Developing a Quality Management System in the Clinical Laboratory

CLSI in 2007 recognized the national and international importance of Quality Systems in the clinical laboratory and developed the “Key to Quality” as a tool to face this challenge. What is this tool and how does its approach enable laboratories to face the challenge to develop a well-defined quality system? The Quality Systems approach is a dynamic process that goes beyond accreditation. This presentation will be an overview of CLSI's approach to take it to another level...living quality.

Leonard LaFazia, MS
International Program Manager
Clinical & Laboratory Standards Institute
Wayne, PA

Thursday May 5, 2011

CYTOLOGY

10:00am-12:30pm (2 hours)

HPV Testing in Cervical Cancer Screening

This session will provide an update on HPV testing in cervical cancer screening.

Ha Nishino, MD
Cytopathology Fellow
Massachusetts General Hospital
Boston, MA

My Journey Through Preparation for the ASCP Molecular Biology Exam

After deciding to take the ASCP MB certification exam, I went to their website and was somewhat overwhelmed by the rather long list of “suggested readings” for preparation. After spending some time on the ASC listserv and searching online, I decided on a course of action. I was able to successfully pass the exam and have been asked by many Cytotechnologists since then how I went about passing the exam. I thought a brief description of my course of action might help others decide how to prepare.

Brenda J. Sweeney, MS, CLA(ASCP)SCT MB^{CM}
Cytopathology Supervisor
Massachusetts General Hospital
Boston, MA

The Use and Abuse of Stains in Cytology

The introduction of immunohistochemical and special stains has enhanced our ability to make more accurate and specific cytologic diagnosis. This presentation will review some of the commonly used stains and staining panels used in cytology. Examples of clinical cases from our department will be used to illustrate points made in the discussion.

Jill Ono, MD
Fellow in Cytopathology
Massachusetts General Hospital
Boston, MA

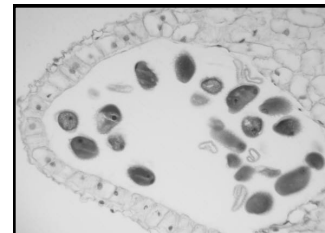
CYTOLOGY

2:00pm-3:00pm (1 hour)

Hyperchromatic Crowded Groups on PAP Tests: An Algorithm to Help Detect Endocervical Adenocarcinoma

Endocervical adenocarcinoma is a major cause of cervical cancer morbidity, with a high rate of malpractice lawsuits. The presentation will show typical examples of significant glandular lesions, and provide the audience with a handout and a description of the key features that allow endocervical adenocarcinoma to be confidently distinguished from the other hyperchromatic crowded groups that it most closely resembles.

Andrew Fischer, Ph.D.
Professor of Pathology, Director of Cytopathology
University of Massachusetts
Worcester, MA



3:30pm-4:30pm (1 hour)

Thyroid FNAC– an Update

The talk will have two parts: the first and major portion dealing with nomenclature and cytologic criteria of the new Bethesda system. The second will touch upon the potential role of ancillary studies in thyroid FNA.

Srini Mandavilli, MD
Pathologist & Director
Surgical Pathology Fellowship
Department of Pathology
Hartford Hospital
Hartford, CT

Thursday May 5, 2011

CHEMISTRY

10:00am-11:00am

(1 hour)

“The Evolving Definition of MI”

Over the past several years, the definition of myocardial infarction has been evolving. This session will review these changes from the WHO criteria of 1979, up to most recent guidelines from the NACB and ACC/AHA on the utilization of cardiac troponin, as well as the current classifications of myocardial infarction.

Vernon L. Mustoe, Ph.D.
Scientific Affairs Manager
Beckman Coulter, Inc.
Brea, CA

Sponsored by Beckman Coulter, Inc.

11:30am-12:30pm

(1 hour)

Vitamin D: Why is My Lab Getting So Many Requests?

Many laboratories have seen a steady increase in the number of requests for Vitamin D levels over the past couple of years. This presentation will attempt to explain the recent increased interest in Vitamin D. The presentation will begin with a brief review of the normal physiological role of Vitamin D and then look at its association with various disease states. The epidemiology of Vitamin D deficiency will also be presented along with a discussion on the analytical aspects of Vitamin D analysis.

Vernon L. Mustoe, Ph.D.
Scientific Affairs Manager
Beckman Coulter, Inc.
Brea, CA

Sponsored by Beckman Coulter, Inc.

CHEMISTRY

2:00pm-3:00pm

(1 hour)

Sepsis: Early Diagnosis

Sepsis is a complex clinical syndrome that is a leading cause of death worldwide. Onset can be rapid, with mortality occurring in as little as 24-48 hours. Pathogenesis is often associated with the “cytokine storm,” an uncontrolled response of the immune system, which can lead to hemodynamic instability and organ failure. Clinical symptoms alone are often insufficient for an early and accurate diagnosis, reducing an already limited window for effective treatment. Emerging biomarkers of sepsis may allow a more rapid and accurate diagnosis, resulting in earlier intervention and improved patient outcomes.

Steve Brimmer, Ph.D.
Senior Clinical Specialist
Siemens Healthcare Diagnostics
Deerfield, IL

Sponsored by Siemens

3:30pm-4:30pm

(1 hour)

Diabetes: A Global Epidemic

Diabetes is increasing in all populations worldwide. It is influenced not only by genetic factors but also by lifestyle and environmental factors. This presentation will discuss the impact of diabetes on our individual health and our overall healthcare financial burden. Risk factors and early intervention strategies will be discussed as well as laboratory assessments that are fast becoming a major portion of our laboratory work.

Steve Brimmer, Ph.D.
Senior Clinical Specialist
Siemens Healthcare Diagnostics
Deerfield, IL

Sponsored by Siemens

MOLECULAR DIAGNOSTICS

10:00am-11:00am

(1 hour)

Cancer Diagnostics- Finding the Magic Bullet

The war on cancer has lead to a search for a magic bullet to destroy a tumor without the side-effects of chemotherapy. New cancer pharmaceuticals & biological drugs have been designed to target specific gene mutations found in a wide array of tumors. With this advance, the new frontier of personalized medicine may soon be a reality. This advance raises the need for cost effective broad spectrum gene testing, presenting a new challenge to the Molecular Lab. A case study approach will be used to highlight the impact of targeted therapies, both on the patient, on the molecular lab that performs the testing. Current methods, and new approaches to molecular testing in this fast evolving field will be presented.

Lloyd Hutchinson, Ph.D.

Scientific Director, Diagnostic Molecular Oncology
UMass Memorial Health Care
University of Massachusetts
Worcester, MA

11:30am-12:30pm

(1 hour)

Microarray-based Molecular Testing

This presentation will address the history and development of microarray-based molecular testing. Different types of microarray, including array CGH, and their main limitations, will also be discussed.

Mai He, Ph.D.

Assistant Professor of Pathology
Warren Alpert Medical School of Brown University
Staff Pathologist
Section Medical Director- Hematology Lab
Women & Infants Hospital
Providence, RI

MOLECULAR DIAGNOSTICS

2:00pm-3 :00pm

(1 hour)

The Role of CT Department of Health in Outbreak Investigations: Conventional Microbiology, PulseNet & Beyond

This presentation will include the collaborations in outbreak investigation among Epidemiology, Food Protection, CDC and other partners. Our laboratory testing methods and capabilities, including the importance of molecular, as well as conventional microbiology will also be discussed. The speaker will include information on how DNA fingerprinting (PFGE & PulseNet) is used during outbreaks and in routine surveillance. Other molecular and rapid methods and examples of interesting outbreaks we've investigated will be presented.

Aristea (Stacey) Kinney, B.S.

Supervising Microbiologist
Connecticut Dept. of Public Health
Hartford, CT

3:30pm-4:30pm

(1 hour)

Direct to Consumer Genetic Testing

Genetic Testing Companies are marketing tests directly to the public. This presentation will discuss the types of genetic information that is available such as ancestry testing and risks for certain diseases. The molecular methodologies used will be discussed as well as the limitations of this type of testing.

Cynthia L. Jackson, Ph.D.

Director Clinical Molecular Biology
Associate Professor of Medicine
Lifespan Academic Medical Center
Warren Alpert Medical School at Brown University
Providence, RI

MICROBIOLOGY

10:00am-12:30pm

(2 hours)

The Tricky Business of Detecting *Trichomonas vaginalis*: Epidemiology, Sequelae & Test Method Comparisons

Trichomonas vaginalis (TV) is the most common curable sexually transmitted disease in the US. Sequelae are similar to GC and CT, yet TV is not reportable to public health. This talk will focus on currently known unique epidemiology of TV, prevalence and sequelae for both men and women, as well as performance characteristics of various test methods including wet mount, OSOM, Affirm VPIII and amplification techniques. Implementation strategies for testing will also be presented.

Kimberle Chapin, MD (DABMM, FCAP)
Director of Microbiology &
Infectious Disease Molecular Diagnostics
Lifespan Academic Medical Centers.
Providence, RI

MICROBIOLOGY

2:00pm-3:00pm

(1 hour)

Pandemic Influenza Testing- The Rhode Island State Health Lab Experience

An overview of the preparation for and management of large scale testing of specimens for pandemic and seasonal influenza.

Robert C. Ireland, Ph.D., HCLD(ABB)
Chief Clinical Laboratory Scientist
Rhode Island State Health Laboratory
Providence, RI

3:30pm-4:30pm

(2 hours)

Sentinel Laboratory Preparedness: Is Your Lab Ready?

An overview of the challenges that LRN Sentinel Laboratories face in order to remain prepared to recognize, rule out and refer bacterial agents of bioterrorism. Suggestion for maintaining capacity & proficiency will be discussed, as will incidents & consequences of improper identification.

Cynthia L. Vanner, B.S.
Supervising Clinical Laboratory Scientist
Bioterrorism Response & Special Lab
Rhode Island State Health Laboratory
Providence, RI



STUDENT

ATTENTION STUDENTS

ASCLS-CNE presents
the
**EIGHTH ANNUAL STUDENT
POSTER COMPETITION!!**

Case studies and research topics (either library research or scientific research) will be presented in a poster format by ASCLS-CNE student members from CLS, CLT & Cytology programs in our area. Posters will be available for your viewing pleasure. Prizes will be awarded at 4:00pm on Thursday following the final session for the day.

For more information, please contact

Mary Lou Frias at 508-531-1254
(marylou.frias@bridgew.edu)

OR

Barbara Klitz at 401-277-5210
(bgk@etal.uri.edu)

**SIGNIFICANT CASH PRIZES WILL BE
AWARDED!**



10:00am-11:00am

(1 hour)

Panel Discussion on Career Paths in CLS

This session will offer the participant an opportunity to learn about the steps from graduation to landing a job. Particular topics will include certification exam testing, applying for and maintaining certification and licensure and the various career paths one can take. This session is offered as an opportunity to hear from and ask questions of recent graduates about finding a job.

Dale Joubert

Siemens

Elizabeth Hart, MA, CLS, MT(ASCP)

University of Massachusetts-Dartmouth

11:30am-12:30pm

(1 hour)

Student Forum Business Meeting

The Student Forum Business meeting is open to all student members of ASCLS. The incoming student president will be introduced. Student members will be updated on upcoming events.

Brandon Healy

Student Forum President

University of Massachusetts

Dartmouth, MA

2:00pm-4:30pm

(2 hours)

Mock Certification Exam

The primary purpose is to help medical laboratory science students prepare for the certification examination. This exam will consist of one hundred multiple choice questions grouped into content areas, including hematology, microbiology, clinical chemistry, immunohematology, urinalysis and immunology. This proctored exam will be timed for 2 hours.

ASCLS-CNE 63rd ANNUAL CONVENTION

Sponsors and Exhibitors

Our thanks to all for supporting the ASCLS-CNE 63rd Annual Convention. As one of the oldest and largest professional organizations in the region, ASCLS-CNE has a long history of excellence in providing continuing education for laboratory professionals. This is due, in part, to the generous support of our exhibitors and convention sponsors.

Please visit the Exhibit Hall on Wednesday and Thursday
Exhibits will be open from 9:00am to 5:00pm on both days.

In addition, ASCLS-CNE will host an
EXHIBITORS' WINE & CHEESE RECEPTION
Wednesday, May 4th from 4:30 to 5:30pm

The following is a partial list of previous Convention sponsors.

Abbott Diagnostics	Immucor
Bayer Diagnostics	Inverness
BD Preanalytical Products	Micro Video Instruments, Inc
Beckman Coulter	Novartis
BioMerieux	Olympus America Inc.
BioRad Laboratories	Ortho Clinical Diagnostics
Biosite Diagnostics	Promega
Blackhawk Biosystems, Inc	Radiometer America
Cardinal Health & Ortho Diagnostics	Roche Diagnostics
Cepheid	Siemens
CYTYC Corporation	Swisslog Translogic
Diagnostic Products Corporation	Symex
Diamedix Corporation	Terumo
Digitrax	Thermo Electron
Eppendorf	TREK
Fisher Healthcare	Trinity Biotech USA
GC & B Company	TriPath Imaging
Global Focusing	Vista Lab Technology
Harvard Vanguard Medical Associates	VWR International
Hologic	
Horiba ABX	

ASCLS-CNE
would like to thank our generous sponsors
for sponsoring our

Speakers
Coffee breaks
Welcome Bags
Wine and Cheese Social



Find us on Facebook@facebook.com/asclscne

ASCLS-CNE 63rd ANNUAL CONVENTION

DIRECTIONS TO THE RHODE ISLAND CONVENTION CENTER

From the North:

Interstate 95 South to Exit 22A. Follow the signs towards the Downtown/Convention Center. Go through the first light in the right hand lane. Take the first right after the light. Take the next right onto Exchange St. After the next light, bear right between the Hotel and the Convention Center to the North Garage.

From the South:

Interstate 95 North to Exit 22A. Follow the signs towards Downtown Convention Center. At the light, turn right onto Francis Street. At the next light, go right onto Sabin Street. Bear right between the Hotel and the Convention Center to the North Garage.

From the East:

Take 195 West. Merge onto 95 North to Exit 22A. Follow the signs towards Downtown/Convention Center. At the light, turn right onto Francis Street. At the next light, go right onto Sabin Street. Bear right between the Hotel and the Convention Center to the North Garage.

From the West:

Take Route 6 to the "Route 6 East and I-295 South" ramp. Take a right and stay to the right following the signs to Providence and Route 6 East (you will use part of the I-295 on-ramp to get onto Route 6 East). Stay on Route 6 East to the end (sign will read "6 East to 10 North") and stay to the left. Continue to the Dean Street Exit. Once on the exit ramp, stay to the left so that you will be on the left side of the island when you reach the light. Turn left onto Dean Street (4 lane road). Then immediately take the first right onto West Exchange Street to the Convention Center Garage.

Meeting Rooms

ASCLS-CNE Meeting Rooms are all located on the 5th Floor of the RI Convention Center. Watch for posted signs for session room assignments.

Park on Level 4 of the Convention Center Parking Lot. Walk to Convention Center/Westin Hotel Entrance. Take a right onto Convention Center Lobby/connector. Signs will be posted. Take escalators to the Fifth Floor. Registration is in the Prefunction Lobby on the 5th floor.

Hotel Accommodations

Hotel accommodations are at the **Hilton-Providence**, located ONE block from the Rhode Island Convention Center. The special room rate is \$139.00/room/night. There is Hi Speed Wireless Internet Access in all guestrooms.

To make reservations, call 401-831-3900, or online at www.providence.hilton.com. Please indicate you are attending the ASCLS-CNE Annual Convention in order to receive the discounted rate. Reservations must be made by **April 15**.

2011 ASCLS-CNE Annual Convention

Registration Information

(Please read the information below before completing the registration form)

Membership Affiliation: Membership discounts are given only to members of the sponsoring organizations listed below.

(NOTE: membership or certification by ASCP or NCA does NOT apply here).

****YOU MUST INCLUDE MEMBERSHIP # TO BE ELIGIBLE FOR MEMBER RATES****

Membership rosters for the following organizations will be checked when registration is received and on site: Northeast Branch American Society for Microbiology (NEB ASM), Rhode Island Cytology Association (RICA) and Bay State Chapter-Clinical Laboratory Management Association.

DIRECTIONS:

Please circle the appropriate fee for all sessions you plan to attend. Enter the total fee for each day in the column titled FEES PER DAY. *Please remember to include separate fees for lunch if they apply. To register for a workshop, circle the appropriate fee for that workshop. Total all registration fees at the bottom of the form.*

ASCLS-CNE is now accepting credit cards for registration payment. If you are paying with a credit card, please complete credit card information on the registration form and be sure to include signature.

REGISTRATIONS postmarked prior to APRIL 29, 2011 include PARKING VOUCHERS. Late & walk-in registrants must park at their own expense.

DO NOT MAIL REGISTRATIONS AFTER APRIL 29, 2011 .

Bring them to the Convention. No refunds will be given after APRIL 29, 2011 .

*****Confirmations WILL NOT be sent by mail*****

Receipts will be available at the meeting only.

2011 ASCLS-CNE ANNUAL CONVENTION REGISTRATION FORM

Last name: _____ First name: _____

Street address: _____

City: _____ State: _____ Zip: _____

Telephone#: (h) _____ (w) _____ RI CLS/CLT License# _____

Institutional (workplace) affiliation: _____ email: _____

****YOU MUST INCLUDE MEMBERSHIP # TO BE ELIGIBLE FOR MEMBER RATES****

American Society for Clinical Laboratory Science (ASCLS) Membership #: _____
 (Please check if member, rosters will be checked)

Member: CLMA RICA NEB ASM

ASCLS-CNE REGISTRATION	<i>Member:</i> ASCLS, RIBBS, CLMA, RISH, RICA NEB ASM	Non- Member	Student Member	Student Non- member	FEES PER DAY
<u>Tuesday, May 3, 2011</u>					
Day Session (Luncheon Excluded)	\$70	\$100	\$25	\$30	
Luncheon Session (1 hr or .1 CEU)	\$25	\$25	\$25	\$25	
Workshop #1- Parasitology	\$100	\$150	\$75	\$80	
<u>Wednesday, May 4, 2011</u>					
Day Session (Luncheon Excluded)	\$70	\$100	\$25	\$30	
Luncheon Session (1 hr or .1 CEU)	\$25	\$25	\$25	\$25	
Workshop #2- Forensic Science	\$100	\$150	\$75	\$80	
Workshop #3- Molecular-PCR Wet Workshop	\$100	\$150	\$75	\$80	
<u>Thursday, May 5, 2011</u>					
Day Session (Luncheon Excluded)	\$70	\$100	\$25	\$30	
Luncheon Session (1 hr or .1 CEU)	\$25	\$25	\$25	\$25	
3-Day Registration (does not include workshops)	\$190	\$280	\$60	\$75	
3-Day lunch	\$75	\$75	\$75	\$75	
				TOTAL:	

Payment Information (CHECK ONE)

Check or Money Order in the amount of \$ _____ (Make checks payable to: ASCLS-CNE)

Credit card: VISA

MasterCard

American Express

Credit card number: _____ Expiration date: _____

Cardholder Name: _____

Cardholder Signature: _____

Mail this completed registration form with appropriate payment (postmarked by April 29, 2011 to:
Maddie Josephs
43 Bourne Avenue
Rumford, RI 02916

May 3, 2011 Tuesday	10:00 -11:00AM / 11:15-12:15 AM		2:00-3:00 PM /3:15-4:15 PM	
PARASITOLOGY WORKSHOP	PARASITOLOGY WORKSHOP ----- (8:00 am - 3:30 pm) Lynn Garcia MS, MT (ASCP) - Sponsored by LSG & Associates			
CHEMISTRY	Vitamin D Brian Lauber Sponsored by Diasorin	ANCA Eric Hoy, PhD Sponsored by Immunoconcepts	ANA & Immunofluorescence Eric Hoy, PhD Sponsored by Immunoconcepts	
HEMATOLOGY	Normal Lymph Node Evgeny Yakirevich, MD	T Cell Lymphoma Dariusz Stachurski, MD	Hematology Case Studies: A Multidisciplinary Approach Karen Ferreira MS,MT(ASCP)	
* LUNCH SPEAKER (12:30 - 2:00 pm) - Patient Centered Care—Pat Mastors				
BLOOD BANK	Babesia Carolyn Young, MD	RBC Storage Christopher Stowell MD	Recent Studies in Mass Transfusion Richard Kaufman, MD	ARC Hemovigilance Ann Eder, MD, PhD Sponsored by ARC
BIOTECHNOLOGY	Biotechnology in New England Gregory Paquette, PhD, MLS	Genes to Vaccines Denise Spero, PhD	Medical Devices Beth Zielinski-Habershaw, PhD	Plant Biotechnology Albert Kausch, PhD
PHLEBOTOMY	Quality Phlebotomy Kathleen Finnegan MS MT(ASCP)SH Sponsored by Greiner-BioOne		Pediatric and Geriatric Phlebotomy Kathleen Finnegan MS,MT(ASCP)SH Sponsored by Greiner-BioOne	
MICROBIOLOGY	Real Time PCR from “Top” to “Bottom” Ellen Jo Baron, PhD Sponsored by Cepheid		Pathogenesis, Epidemiology, Current Status of TB Ellen Jo Baron, PhD Sponsored by Cepheid	
May 4, 2011 Wednesday	10:00 - 11AM /11:30-12:30PM (EXHIBITS 9 – 5 pm)		2:00 – 3:00 PM / 3:30 – 4:30 PM (EXHIBITS 9 – 5 pm)	
MICROBIOLOGY	Infections of Leisure Franklin Meglio, MS,SM(NRM)		Antimicrobial Resistance John Lonks, MD	
CHEMISTRY	High Sensitive Cardiac Troponins Susan Perrier, RN, MS Sponsored by Siemens		Celiac Disease Wen Kumfert, PhD Sponsored by Bio-Rad	
HEMATOLOGY	Acute Leukemia Diana Treaba, MD	CLL and MM Eric Winer, MD	The Revolutionized CBC Fernando P. Chaves, MD Sponsored by Beckman-Coulter	Routine Hematology Case Studies Mark LeGolvan, DO
* LUNCH SPEAKER (12:30 - 2:00 pm) - Mother’s Milk Bank- Kathie Marinelli, MD				
BLOOD BANK	Hemotherapy Biovigilance C. Andrzejewski, PhD, MD	Case Studies/Vet Medicine Lynel Tocci, DVM	Blood Bank’s Role on Patient Care Team Linda A. LeVinus,MT(ASCP)	Blood Substitutes-2011 update Nancy Cornwell, M.Ed, MLS Sponsored by Bio-Rad
FORENSIC SCIENCE WORKSHOP	FORENSIC SCIENCE WORKSHOP ----- (9:00 am - 4:30 pm) DNA Analysis Karen Lynch MS CSI at URI Crime Laboratory Dennis Hilliard MS Energetic Materials Jimmie Oxley, PhD Medical Examiner in the Clinical Lab Thomas Gilson MD			
PUBLIC HEALTH	Overview of Skin Cancer Leslie Robinson-Bostom, MD		Natural Products in Cardiovascular Health and Disease Anne Hume PharmD, FCCP,BCPS	
MANAGEMENT	All the Hows & Whys to Achieving Standard Work in Lab Martha Sunyog, MT(ASCP) Sponsored by Ortho Clinical Diagnostics		Best Practices in Laboratory Operations James Jarnot Sponsored by Beckman	
MOLECULAR WORKSHOP	MOLECULAR - PCR WET WORKSHOP --- (9:00 am - 4:30 pm) Cynthia Jackson PhD & Shashi Mehta PhD - Sponsored By Promega & Eppendorf			
4:30-5:30 PM Exhibitors’ Reception Wine & Cheese – Sponsored by Siemens - All are welcome!				
May 5, 2011 Thursday	10:00 – 11:00 AM / 11:30-12:30PM (EXHIBITS 9 – 5 pm)		2:00 – 3:00 PM / 3:30-4:30 PM (EXHIBITS 9 – 5 pm)	
HEMATOLOGY	Congenital and Acquired Thrombocytopenia Joseph Sweeney, MD, FACP, FRCPath		Hematology Scatter Plot Analysis Barbara Burch, MD Sponsored by Sysmex	
CHEMISTRY	The Evolving Definition of MI Vernon Mustoe, MD Sponsored by Beckman	Vitamin D Vernon Mustoe, MD Sponsored by Beckman	Sepsis Steve Brimmer, PhD Sponsored by Siemens	Latest in Diabetes Steve Brimmer, PhD Sponsored by Siemens
*LUNCH SPEAKER (12:30 –2:00PM) - Risk Management—Joseph Melino				
BLOOD BANK	It’s All About Molly Rustin Moore, DVM	Emerging Pathogens-risk to Blood Supply Frank J. Strobl, MD, PhD	Managing Ab Resolutions Gina Campagnone, MS, SBB	Blood Utilization Review James Kolton, MD
MICROBIOLOGY	Trichomonas vaginalis-an update Kimberly Chapin, MD		Influenza Testing Extravaganza Robert Ireland, PhD	Challenges of Sentinel Labs Cynthia Vanner
CYTOLOGY	HPV Testing Ha Nishino, MD	ASCP Molecular Biology Exam Brenda Sweeney, MS	Use & Abuse of Stains Jill Ono, MD	Endocervical Adenocarcinoma Andrew Fischer, PhD
STUDENT FORUM	Career Opportunities: Beyond the Bench	Student Business Meeting Brandon Healy	Mock Certification Examination ASCLS-CNE Student Forum	
MANAGEMENT	What’s New in the Laboratory Accreditation Program Adrienne Malta		The Key to Quality Lenny Lafazia, MS	
MOLECULAR DIAGNOSTICS	Cancer Diagnostics Lloyd Hutchinson, PhD	Microarray Applications Mei He, MD, PhD	Public Health Molecular Biology Stacie Kenney, BS	Consumer Directed Genetic Testing Cynthia Jackson, PhD

ASCLS-CNE

American Society for Clinical Laboratory Science -Central New England

63rd Clinical Laboratory Science Convention -2011

Maddie Josephs MS, MT(ASCP)

43 Bourne Avenue

Rumford, RI 02916